

STEP 11 Main Gear & Shaft Assembly

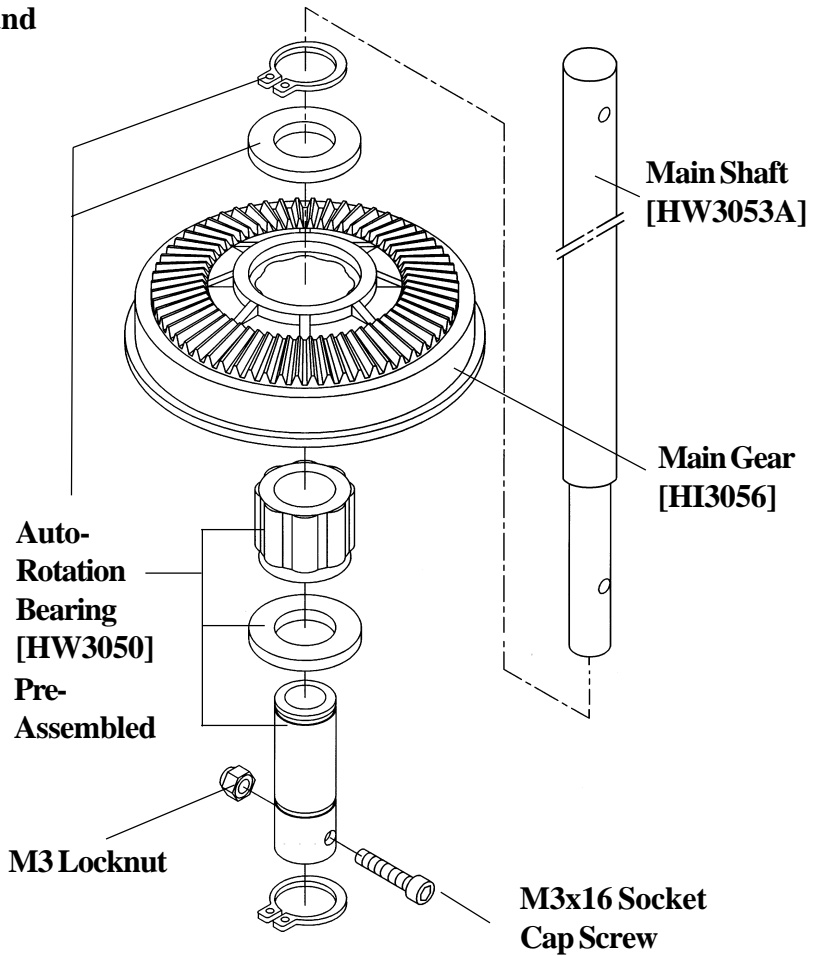
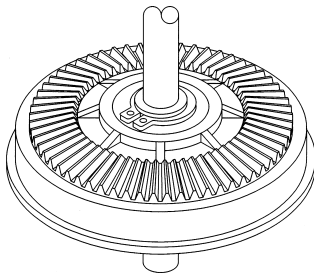
From parts bag 2: The Main Gear is pre-assembled with the Auto-Rotation Bearing installed. Insert the bottom end through the auto rotation gear assembly, align the holes and secure the Main Shaft using one 3x16mm Socket Cap Screw and one 3mm Locknut.

Tip 1

You can temporarily insert main shaft, main shaft bearing spacer & bearing, stopper and head block screw to keep them from getting lost!

* Do not apply threadlock here. *

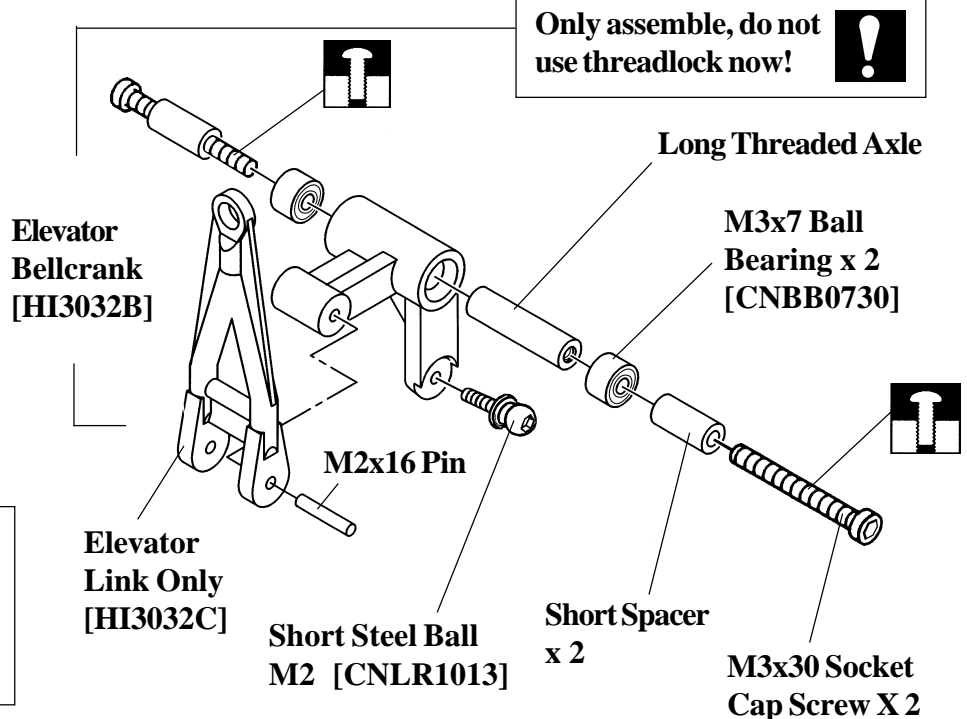
Completed
Main Gear &
Main Shaft



STEP 12 Elevator Lever Assembly

From parts bag 2: Insert the long threaded axle and one M3x7 ball bearing from each end of the bellcrank. Slide one short spacer over one 3x30mm Socket Cap screw and attach to the threaded axle (**do not use threadlock here!**), repeat for other side. The 2x16mm pin is assembled, just insure the elevator radius link moves freely against the Bellcrank. Thread one short steel ball into the elevator arm.

Only assemble, do not use threadlock now!



CNQSC04
Optional machined
ball bearing
elevator arm w/
adjustable ball link.